

[It's a competitive world. Train for it.]



The programs your company and employees need.

Through Bismarck State College and
TrainND, your business can become
more efficient and profitable.

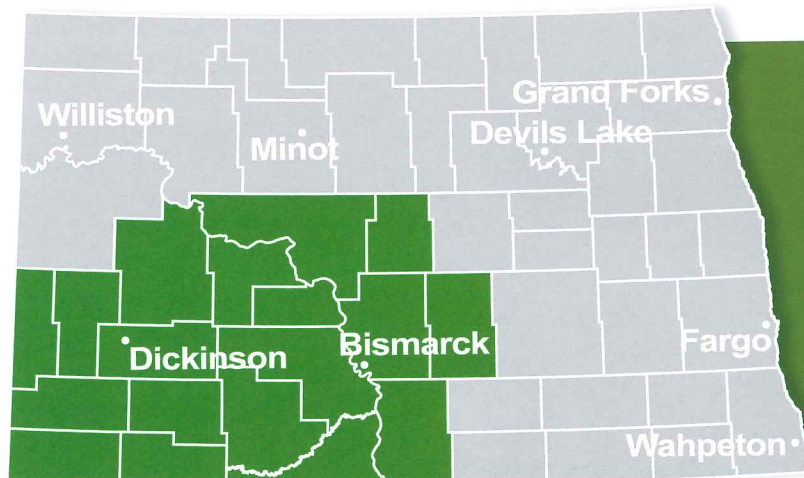
trainND
SOUTHWEST

Powered by: Bismarck State College

TrainND Outreach Services

As your organization faces challenges such as new leadership, rapid growth, retirements, new hires, technology expansion, and other modifications, it may be time to seek our assistance to facilitate, develop, or manage these areas.

TrainND Southwest is committed to building tomorrow's workforce by analyzing goals and developing training solutions to advance a business's most important asset: human capital. An investment in developing your company's talent will set you apart from the competition. TrainND Southwest managers will work with you in providing business solutions and opportunities for organizations to succeed in today's knowledge based, high tech economy.



Training Increases

- Employee Retention
- Productivity
- Competitiveness
- Customer Satisfaction
- Company Growth

Levels of Training

TrainND Southwest can tailor any course to match the level of training desired.



Awareness (1-5 hours)

Individuals gain an awareness of a new skill, topic, idea or method in intensive seminars. Awareness sessions are used for orientation, overview or reinforcement.



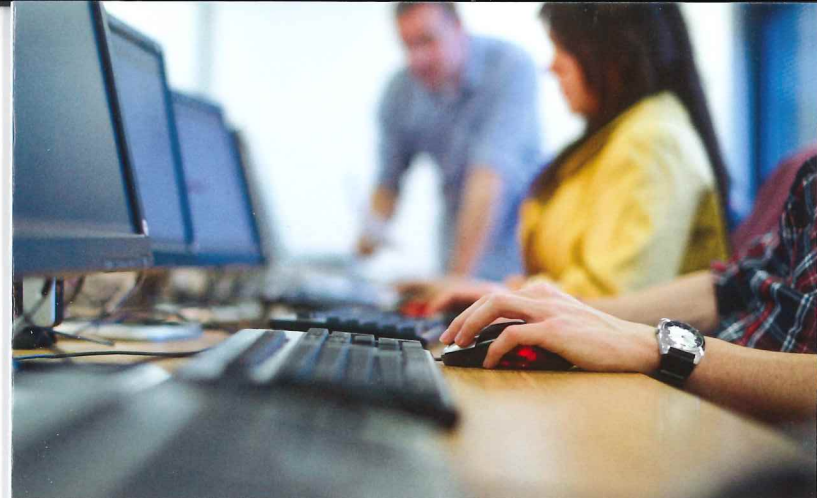
Learning and Practicing (6-14 hours)

This level of training is often structured as a workshop to enable an individual to learn and then reinforce the new skill acquired. Learning and practicing a new skill improves productivity and can boost employee morale.



Mastering (15-50 hours)

At this level of training, individuals will become proficient at the skill investigated. TrainND Southwest works with industry experts in a variety of subject areas to lead and instruct these mastery programs.



The programs your company and employees need

TrainND Southwest and Bismarck State College work with you to develop new programs along with offering programs in medical training, computer training, technical training, and employee and organizational development.

Computer Training

Adobe Acrobat
Adobe Dreamweaver
Adobe InDesign
Adobe Photoshop
AutoCad
Blogs – Wikis, Facebook
Creative Photo Slideshow
Computer Skills for the Workplace
Constant Contact

Email Etiquette
Facebook Security
GIS (Geographic Information Systems)
Microsoft Office (Access, Excel, Outlook, PowerPoint, Window, Word)
MS Project
MS Publisher
OneNote

Quickbooks
Social Media Strategies
Your Ipad at Work
and more

Technical Training

Asbestos (Inspector Refresher, Inspector Management, Project Design, Supervisor/Contractor, Welding Training)
AutoCAD
Blue Print Reading
Boiler Plant Operations and Maintenance
Certified Nursing
Confined Space Safety Training
Crane Operator Certification
Engineering Drawing
GIS (Geographic Information Systems)

Heater Boiler Operations
HVAC
Industrial Maintenance Troubleshooting
Introduction to Welding
Nursing Assistance Training (CNA)
OSHA – 10 hour
PEC Basic 10
Sheet Metal Fabrication
30-Hour Construction Industry Safety Training
Welding Certifications
Welding Training
and more

Customized training for custom solutions

Your business isn't like any other, so TrainND Southwest and Bismarck State College offer custom courses and training for your employees that align with your existing processes.

TrainND Southwest staff will:

- Train at the Bismarck State College campus or at your business
- Offer a variety of customized training in various formats
- Provide assessments for businesses to uncover obstacles to maximize performance
- Work with clients to understand their industry, competition, marketplace, and strategies

Employee Development

Accelerating Business Decisions
Accountability That Works
Attitude and Motivation
Better Business Writing
Business Etiquette
Critical Thinking Skills
Diversity Awareness
Effective Business Writing
Effective Communication
Effective Presentations
Excellence in Customer Service
Exceptional Performers Certificate (Communicating with Impact, High Impact Feedback and Listening, Navigating Beyond Conflict, Embracing Change, Taking the HEAT, Working as a High Performing Team)

Financial Management: Basic
Fostering Trust in the Workplace
Frontline Leadership
Fundamentals of Selling
Healthcare (Nursing Assistance Training, CMA, CPR, Advanced Cardiac Life Support, Pediatric Advanced Life Support)
Innovation DNA
Interpersonal Communications
Interviewing Skills
Managing Change
Meetings that Work
Mentoring 101
Myers Briggs
Networking
Personal Innovation Competencies

Process Mapping
Project Management
Skills for Making Great Decisions
Stepping into Supervisory Role
Team Development
True Colors
Workplace Communications
Your Leadership Journey
and more

TrainND provides training for North Dakota business and industry, enhancing their ability to compete globally.

Organizational Development

Account Management
Advanced Coaching
Benefits of Workplace Mentoring
Business Problem-Solving
Coaching
Conducting Meetings
Conflict Resolution
Cross – Functional Collaboration
Delegation Skills
Design a Mentoring Program
Developing a Business Plan
Effective Business Writing
Effective Management
Emotional Intelligence
Employee Retention
Empowering Your Employees
Engaging and Retaining Talent
Establishing a Mentorship Program

Exceptional Leaders Certificate (Communicating for Leadership Success, Coaching for Peak Performance, Delegating with Purpose, Resolving Workplace Conflict, Driving Change, Setting Goals & Reviewing Results)
Facilitation
Generational Impact
Generations in the Workplace
How to be an Effective Mentor
Innovation Practices
Interpersonal Communications
Interviewing Skills
Leading Change
Learning Styles
Making High Quality Decisions
Managerial Leadership
Managing Diversity
Managing Offsite Employees
Managing Performance

Navigating Through Change
Negotiating
New Hire Training
Organizational Trust
Performance Appraisals
Performance Management
Presentation Skills
Principles of Marketing
Process Mapping
Productive Meetings
Project Management
Public Speaking
Quality Management
Reinforcing Leadership Development
Strategic Planning
Strength Finders
Succession Planning
and more



The more highly trained your employees, the better your company performs

With the North Dakota economic growth, a new challenge emerges: giving your employees the continued training they need to help your company stay competitive.

TrainND Southwest and Bismarck State College deliver strength through partnership with businesses like yours throughout southwest North Dakota. BSC is one of the community colleges working with industries across the state to provide talent development services and training solutions.

The result? Your company's bottom line is strengthened. Your employees view your company as a forward-thinking place where they'd like to stay. Productivity improves. And, your company is able to better compete locally, regionally, and nationally.

Nationally recognized reasons why Community Colleges should be your training resource

1. **Experience** – Serving hundreds of businesses and agencies in the community and drawing on a team of experts.
2. **Responsive** – Immediate and attentive response to business – employee development needs.
3. **Accessibility** – Access to real-world, high quality subject matter experts (SME).
4. **Diversity** – An extensive library of course programs, delivery methods, and SME's.
5. **Customization** – The solution includes more than training – such as assessment, pre-testing, consulting, post-testing, coaching, and more.
6. **Flexibility** – Efficient and effective on-line, face-to-face, hybrid and/ or blended learning environments.
7. **Results** – Providing performance tracking and improvement measurements.
8. **Partnerships** – Work with multiple vendors and consultants, national boards, Economic Development Councils and Chamber of Commerce plus access to over 1200 community colleges across the US.
9. **Pre-Screen** – Instructors are screened before hiring to ensure the highest level of business expertise and facilitation experience.
10. **Stability** – A proven track record of having successfully worked with small, medium, and enterprise businesses and federal, state, and local government agencies. Long standing record of performance and sustainability.
11. **Recognition** – Receive regional and national credentialing, certificates, and CEU's. Reputation and brand equity of the College is already established.

Start thinking beyond.

Learn more about TrainND Southwest today.



Powered by: Bismarck State College

Contact Us:

701-224-5600 | 1-877-846-9387

www.bsctrainND.com

Training Managers:

Dave Huizenga – 701-224-5683
david.huizenga@bismarckstate.edu

Deb Larson – 701-224-2534
deborah.a.larson.1@bismarckstate.edu

Sara Vollmer – 701-224-5639
sara.vollmer@bismarckstate.edu